



EMV 專題

## 綜合職業康復服務中心

為

配合社會福利署在職業康復服務所推行的改革，本會的庇護工場「展毅中心」已於二零零四年四月一日開始轉型為綜合職業康復服務中心，以一個新服務模式運作，為不同類別的殘疾人士提供一站式的綜合職業康復服務。

職業康復服務中心為殘疾人士提供一系列綜合、連貫及多類型的康復服務，包括以中心為本的庇護工作及工作實習、非中心為本的流動工作隊、各類型的職業技能訓練及在職培訓、輔助就業及公開就業選配等，讓更多具備工作能力的學員有機會透過中心的就業準備小組，接受多元化的訓練，直接提升往輔助就業，進而參與公開就業。另一方面，職業康復服務中心提供的服務亦希望能夠讓缺乏工作技能及經驗的學員，有更多在職培訓及工作實習機會。職業康復服務中心目標是透過提供適切的訓練，並按服務使用者的能力及興趣，為他們個別度身設計合適他們的服務，使他們獲得持續性服務及全面的發展。

本職業康復服務中心提供10個服務名額，服務對象是15歲或以上、能夠自我照顧、精神及情緒狀況穩定，而又能受惠於職業康復服務的殘疾人士。在轉介途徑方面，可經由學校社會工作者、醫療社會工作者、家庭個案工作者及康復服務單位職員轉介至社會福利署之康復服務轉介系統。

在收納個案的程序上，新中心亦加強了對服務使用者的綜合職業評估服務，透過不同的工作技能測試和就業評估面談，客觀和系統化地識別申請人在職業上的技能及潛能，做好個案的管理、發展和跟進工作。中心亦設計多項工作訓練和實習課

程來提升服務使用者的工作動機、培養良好的工作態度與習慣，課程包括：

- (1) **庇護工場技能訓練**：協助學員學習和實際運用一些專門技能，如搬運、剗車使用等。
- (2) **職前培訓課程**：協助學員認識現時勞工市場情況，增強求職面試之技巧及信心。
- (3) **工場在職培訓**：以中心為本的工作訓練，如清潔、包裝等，以訓練學員的工作專注力、持續性、工作態度、與工作場所的人際相處技巧。
- (4) **戶外團隊工作訓練**：透過讓學員參加一些流動工作隊實際外出工作，增加與社區環境的接觸，進一步融入社會。
- (5) **真實工作環境培訓**：在模擬商業工種及環境下工作，為學員投身社會作準備。

由於綜合職業康復服務中心正式運作只有兩個月，中心會密切注意轉型後之服務成效，亦會儘快作出服務檢討，如有需要，會作出服務改善，以便能繼續協調運作模式和提昇服務質素，協助學員發揮工作能力，公開就業並融入社會。





## 綜合家居照顧服務

### 「春日齋宴遊」

在

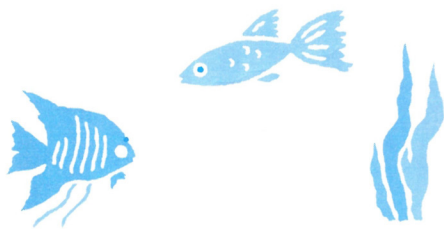
四月十五日，綜合家居照顧服務舉辦了「春日齋宴遊」活動，二十三位長者在九位同工及義工的帶領下參加了當日活動。第一站是參觀香港仔漁業教育中心，接著是品嚐健康美味的齋宴，最後一站是遊覽山頂公園，大家在觀景台上放眼眺望，盡覽維港景色。各長者共渡了開心快樂的一天。



在山頂公園前來一張大合照



在漁業教育中心的大白鯊模型前影張靚相先



嚴

寒的冬天終於過去了，在寒流襲港期間，隊長吳姑娘、各前線同工、本會義工探訪了長者共233人次，期間共派發了毛氈、禦寒衣服、冷手套和保暖拖鞋給有需要的長者，除了禦寒物品外，我們亦送上了熱切的慰問及關懷，使長者暖在心頭，感受到人間有情。

### 「寒冬送暖」

### 「同工訓練」

#### ◆「家居氧氣治療講座」

在

二月三日，本服務隊邀請了康健醫療用品有限公司的職員，為前線同工安排了一個名為「家居氧氣治療」的培訓講座。在講座中，講者向同工清楚解釋如何正確地使用氧氣機，透過是次講座，能增強大家對使用氧氣機的認識，令我們能更有效地協助服務使用者使用氧氣機。



講者正向同工清楚解釋如何正確地使用氧氣機

在

三月份，綜合家居照顧服務隊響應黃大仙區議會的「衛生社區顯愛心大行動」，協助探望六十多位獨居長者及派發清潔禮物包給他們，在探訪過程中，亦將健康與衛生的訊息帶給他們。

### 「衛生社區顯愛心大行動」

#### 「關懷獨居老人服務計劃」義工招募

本

會新一期之「關懷獨居老人服務計劃」將於本年九月舉行，探訪期為六個月，探訪區域為慈雲山、橫頭磡及石硤尾的獨居長者。本會將提供有關之訓練課程，其中包括專業人士主講與長者溝通技巧、老人常見疾病、長者復康運動。若了解活動詳情，可致電

2776 8569 與區姑娘聯絡。





## 展毅中心

**在**是期通訊中，我們邀請了中心的一位活動助理，分享一下她在本中心工作了半年多的感受，希望藉此令大家對中心服務有多些認識和了解。

### 工作偶感

岑姑娘

**不**經不覺在展毅中心已工作了六個多月，從未想過自己會投身一份全職協助訓練殘疾人士的工，面對一班隨時情緒起伏不定的工友，要學的實在很多，由於自己沒有這方面的工作經驗，只能邊學邊做。在這數月工作的過程中，自己體會到最重要是學習如何去接納他們，聆聽他們的困難及需要，協助他們提升自信，發揮自己的潛能，去過獨立生活。

在工作過程中，自己感到不足的是缺乏對殘疾人士心理的認識，希望中心能安排一些講座或短期課程，如「認識殘疾人士的心理及情緒病徵」等，透過多些了解他們的心理狀態，知道甚麼應該做，甚麼不應該做，令自己更有信心與工友接觸及溝通。

不過，中心近期有很多迫切的行政工作需要處理，如每月計算學員分數、SOS各項文件的準備工作、各組同事要負責的工作等，令中心暫時未能停下來，多聽取我們的意見，多作一點工作上的反思。最後，自己會在工作崗位上繼續努力，期望自己能在工作中不繼學習及成長。

(岑姑娘為展毅中心的活動助理)

## 活動報告

**中**心在過去的一季舉辦了不少活動，最令工友們開心的是春茗了。大家能濟濟一堂，在酒店內共享一頓豐富的自助餐。此外，各客戶亦送贈了很多禮物給工友們作遊戲及抽獎之用。工友

在活動過程中開懷地吃喝玩樂，而來臨的嘉賓及客戶在悠閒的氣氛下，與工友們互相認識及了解。在是次活動中，除可讓客戶多了解工友外，亦可讓工友了解客戶對我們的期望及要求，從而提高我們服務的質素。

此外，為推廣中心的業務及讓更多的社區人士認識本中心，中心聯同工友參加了由社會福利署舉辦的推廣



工友們正協助中心職員準備攤位



大家聚一堂，享受一頓豐富的自助餐

日，介紹本會各類的服務及展示本會製作的產品，過程中亦安排工友們向參觀人士介紹本中心的服務。工友們均表示是項活動很有意義，不但增加了他們對中心的服務的認識和了解，更提升了他們的自信心。

### 「電動輪椅一站通」

#### 電動輪椅上門清潔及美容服務

**電**動輪椅「一站通」自二零零二年十一月開展服務至今，已招收了一百三十多位會員，亦為過百電動輪椅使用者提供電動輪椅維修，保養及租借服務。為了提供更多元化的服務，我們於本年六月增添了電動輪椅上門清潔及美容服務，服務內容包括清洗車架、前轆、去銹、打臘等，費用為每部輪椅港幣壹佰伍拾元正，會員繼續享有八折優惠，各復康機構如同時有超過五部電動輪椅，更可享再九折優惠。若對此服務有任何查詢，歡迎隨時致電與電動輪椅工程師梁先生聯絡。

而各仍未入會之電動輪椅使用者，請盡快申請入會，以享有各項電動輪椅服務之優惠價格，所有新入會之會員年費為每年港幣伍拾元正。





長者軟件應用訓練課程

本

會於三月十日起分別於傷健協會赤柱長者鄰舍中心及仁濟醫院鄧碧雲紀念長者鄰舍中心開辦長者電腦復康訓練支援服務的「電腦健腦操」訓練課程。此課程共有十二堂，主要利用本會製作的長者電腦訓練軟件並配合相關的小組訓練活動來訓練及提高長者的反應時間及手眼協調能力。參加課程的長者均表示課程的內容豐富及有趣味，而他們的反應時間及手眼協調能力經測試後亦証實有所改善。有見及此，本會已開始廣泛地推廣這個課程，初步的反應亦甚理想。若機構有興趣申請上述課程，歡迎致電本會查詢有關詳情。



長者正在全神貫注地使用訓練軟件。



課程完畢後，參加課程的長者與導師（前排中間）合照留念。

「復康訓練互動網站」重新登記  
會藉以享豁免年費優惠

由

於本網站的資助和一年的服務豁免年費優惠，分別於去年和今年三月底完結，本會為了延續網站服務，繼續發展多類型及創新的電腦訓練教材，現決定徵收二零零四年四月至二零零五年三年的年費，港幣五十元正。為了多謝會員一直以來對此服務的支持，凡於今年六月底前申請續會及重新填寫「會員申請及續會表」，本會將豁免其二零零四至二零零五年度會費。現有會員在六月三十日前未重新登記會籍，將會在七月份無法使用網站服務。而新會員於六月三十日前入會，亦可享二零零四至二零零五年度會費豁免優惠，凡於七月一日或以後入會，無論新舊會員均需繳付年費港幣五十元正。在此再一次感謝各會員一直以來積極參與和支持「復康訓練互動網站」(ine)服務計劃。如有任何查詢或建議，歡迎致電2788 3211 與網站負責人黃先生聯絡。

本會哀悼榮譽顧問方心淑博士

會榮譽顧問方心淑博士於二零零四年二月二十九日逝世，本會感

謝方博士一直支持本會的復康服務，在此，本會哀悼方博士的離世，並對其家人表示深切的慰問。



季刊與你 EMV Bulletin for You

請填妥回條寄回石硤尾邨四十四座平台207-212室，「工程及醫療義務工作協會」收。

Please fill in the form and mail to EMV, 207-212, Podium Floor, Block 44, Shek Kip Mei Estate, Kowloon.

☐ 本人希望加入貴會成為義工

☐ 本人願意捐助 \$\_\_\_\_\_ 支持貴會工作  
(支票抬頭為「EMV」)

姓 名 Name : \_\_\_\_\_

職 業 Occupation : \_\_\_\_\_

地 址 Address : \_\_\_\_\_

☐ I want to join your Association as a volunteer.

☐ I wish to donate \$\_\_\_\_\_ for supporting your Association  
(the bearer of the cheque is "EMV")

性 別 Sex : \_\_\_\_\_

電 話 Tel no. : \_\_\_\_\_

本會為政府認可的慈善機構，所有捐款可獲發免稅收據。

EMV is a registered charitable organization. All donation to us is tax deductible.



在是期通訊中，我們會介紹一款適合體弱長者使用的「個人警報連感應器」。這款警報器由跳舞氈改裝而成，可應用在醫院及護理院舍中。

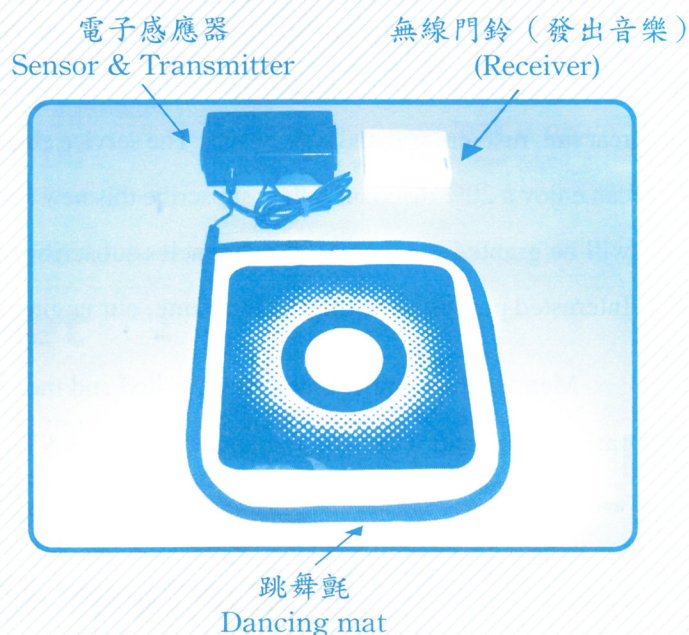
## 個人警報連感應器

用家庭式遊戲跳舞氈改裝而成的一種感應開關，它是由兩片導電體構成，跳舞氈受壓力的時候，兩片導電體就會接觸，經特別設計的電子感應器會在備用狀態中。當跳舞氈的壓力消失，兩片導電體就會分開，因而觸動感應器發出相應的訊息。

其中一個實際應用的例子是一個有需要特別照顧的伯伯，我們把跳舞氈放在他的床上，當伯伯自行離開床時，就會觸動感應器，發出音樂訊息，護理員在收到訊號後，便可立即前往照顧伯伯。而這個以跳舞氈改裝成的感應器，亦可接駁病床召喚鐘，以方便應用在醫院或護理院舍中。

## Personal alarm with sensor mat

The personal alarm with sensor mat is modified by using the family playstation dancing mat. It consists of two conducting plates. When pressure is exerted on the sensor mat, the two conducting plates will have contact with each other and the sensor will be in standby mode. When the pressure vanishes, the conducting plates will detach and activate the sensor to provide musical feedback.



One practical example is on the application of this product for the care of frail elderly. A personal alarm with sensor mat is put on the bed of a frail elder. When he gets up, the sensor will be activated and the carer will receive the signal and immediate care can be provided to the frail elder. This device can be used in connecting to the hospital bed alarm which is applicable in hospital and care and attention home.

如有興趣訂購上述儀器或有有任何查詢，歡迎致電 2776 8569 與職業治療師聯絡。  
For enquiry, please feel free to contact, our occupational therapist, at 2776 8569.





EMV News

## ***Integrated Home Care Service***

### **Talk on Long Term Oxygen Therapy**

**S**taff of Medicare Health Products Co. Ltd. was invited to deliver a talk on "Long Term Oxygen Therapy" to workers of the Integrated Home Care Service on 3 February 2004. During the talk, operation of oxygen concentrator was demonstrated. With the acquisition of knowledge on the application of the machine, more effective service can be rendered to our service users who are using the machine.



The speaker explained the application of oxygen concentrator.

---

## **Electric Wheelchair Repair Clinic and Resource Centre**

**T**his service has commenced operation since November 2002. Since then, over 130 electric wheelchair users have joined as members. The service has also provided repair, maintenance and on loan services to over a hundred users. To provide comprehensive service, home based cleaning and beauty service for electric wheelchair will be launched from June 2004 onwards. The service will include general cleaning of the frame, rear tire, rust removal and waxing etc. The service charge is \$150 per wheelchair. Members can enjoy a 20% discount if they subscribe this new service. An additional 10% discount will be granted to rehabilitation agencies subscribing service for over 5 wheelchairs. Interested parties can contact Mr. Leung, our engineer for details.



Membership application is now invited and members can enjoy discount rate for various services. The annual membership fee is \$50.

---

## **Volunteer Recruitment for "Care for the Elderly Living Alone"**

**T**he new round of service for the "Care for the Elderly Living Alone" will commence in September 2004. The service will last for six months. Volunteers will be arranged to visit living alone elderly residing in Tsz Wan Shan, Wang Tau Hum and Shek Kip Mei. Relevant training including communication skills, common geriatric illnesses, rehabilitation exercises will be provided prior to commencement of service. For details on the service, please contact Ms. Au at 2776 8569.







## Interactive Multimedia-Based Training Program for Hong Kong Chinese Elderly

Starting from 10 March 2004, the training course on the 'Application of Multimedia Training Program for the Elderly' was organized for two elderly service centres namely, the PHAB Stanley Neighbourhood Elderly Centre and Yan Chai Hospital Tang Pik Wan Memorial Neighbourhood Elderly Centre. The training course consists of 12 sessions. The training programs developed by our Association are used as a training media in addition to other group activities. The training can enhance the participants' responsiveness and eye hand co-ordination abilities. The feedback from the participants was very encouraging. They commented that the course was very interesting and stimulating. Their response and eye hand co-ordination ability have also proved to have improved. In view of the positive response, the training course will be further promoted. Any agencies / centres interested in organization of this training course can contact our Association for further details.



The elder paid full concentration in using the training programs.



All participants took a photo together with our tutor, Mr. Lau.

### Membership Renewal for I-net

Due to the expiry of funding support for the project in 2003, the membership exemption scheme was also terminated since March 2004. In order to continue the operation of the project and to develop a greater variety of training programs, some sources of income have to be secured. Starting from April 2004, a \$50 annual membership fee will be charged. As a token of appreciation for the support of members in the past years, the annual membership fee for 2004-2005 will be exempted for those who renew their membership before end of June 2004. New members registered before end of June 2004 can also enjoy this privilege. As from July 2004 onwards, the service will no longer be available if the membership is not renewed. With effect from 1 July 2004, a \$50 annual membership fee will be charged. For any enquiries, please contact Mr. Wong at 2788 3211.







工程及醫療義務工作協會

Association for Engineering and Medical Volunteer Services

九龍石硤尾邨四十四座平台二零七至二一二室

No. 207-212, Podium Floor, Block 44, Shek Kip Mei Estate, Kowloon. Tel: 2776 8569 Fax: 2788 1194

Web-site: [www.emv.org.hk](http://www.emv.org.hk) E-mail: [info@emv.org.hk](mailto:info@emv.org.hk)

## PRINTED MATTER



EMV Focus

### Integrated Vocational Rehabilitation Services Centre

In response to the reform on vocational rehabilitation services implemented by the Social Welfare Department, our Sheltered Workshop - The Endeavor has transformed into an "Integrated Vocational Rehabilitation Services Centre (IVRSC)" from 1 April, 2004.

The new Centre provides a series of comprehensive vocational rehabilitation services for disabled persons, ranging from centre-based sheltered work to job attachment, mobile crew, skills training, on the job training, supported employment and open employment services. Through the participation in pre-vocational training groups and a variety of training programs, disabled trainees are equipped and prepared for work advancement to move on to supported employment and open employment. At the same time, service users with potential for open employment but lack work skills and experience, can also receive on the job training and job attachment opportunities from the Centre. The objective of the Centre is to provide individualized and tailor made services for the users so as to facilitate comprehensive development.

The capacity of the Centre is 170. The target service users are disabled persons, aged 15 or above with self care abilities, mentally and emotionally stable and can benefit from vocational rehabilitation services. Referral for service has to be made to the Central Referral System for Rehabilitation Service of the Social Welfare Department via medical social workers, school social workers or social workers of family service centers.

In handling entry of service users, vocational assessment service is further strengthened. Through various job tests and individual assessment, an objective and systematic view on the abilities and potential of the service users can be obtained. An accurate assessment can facilitate better case management and follow up in the future. To enhance the work motivation and work habits of the service users, various skills training courses and practicum are also developed. These training programs include:

- (1) **centre-based training** : to facilitate service users to acquire and practise certain work skills for instance bulldozer operation and transportation
- (2) **pre-vocational training course** : to assist service users to have better understanding of the current job market and to strengthen their interviewing skills and confidence.
- (3) **On the job training provided in the Centre** : such as cleaning, packaging etc. so as to train up the concentration, persistence, work attitude and interpersonal relationship skills of service users.
- (4) **Outdoor team work training**: through the participation in mobile crew, the service users' contact with the community can be enhanced which can facilitate their integration into the society
- (5) **Coaching provided in the real work environment**: to prepare the service users for open employment, job placement in a simulated work environment can be provided.

Since our Integrated Vocational Rehabilitation Service Centre has only commenced operation for two months, the effectiveness of this new service mode has to be closely monitored and service evaluation will be conducted shortly. Improvements will be made whenever necessary so as to further upgrade the service quality and to assist the service users to develop their potential to the fullest extent.

