



EMV 專題

展毅中心——與時並進之庇護工場

本

會由社會福利署資助承辦的第一所庇護工場已於二零零二年三月一日正式投入服務，工場名為『展毅中心』(The Endeavor)，位於屯門富泰邨，會為一百三十多名殘疾人士提供職業復康訓練，至今已經招收了約四十名學員。中心之取名正好表現本會對提供復康服務的理念——協助殘疾人士以堅毅的精神克服困難，盡展所長。生命的道路崎嶇，殘疾人士需要克服的障礙也不少。我們尊重生命，尊重每一個個體。每個人都擁有不同的能力及長處，並有權在生命中發揮自己，殘疾人士亦不例外。中心各同工都本著這份『展毅』的信念為殘疾人士服務。我們不但提供多類型之職業訓練，更著重提升服務使用者的身心健康、自信心及社交能力，以協助他們投入社會。

展毅中心是一所與時並進之工場。

中心運作靈活多變，提供多元化及切合社會需求之職業訓練，以適應環境變遷及經濟轉型。隨著工廠生產工序北移，本港對包裝及車衣等人力需求亦大大下降。因此，中心除了安排郵件處理訓練



▲ 家居清潔服務

外，更致力發展及提供多類型技術性及外展職業訓練，包括家居及寫字樓清潔、汽車清潔、排版速印、電腦資料輸入、橫額製作、乾濕洗衣、速遞收送等服務及訓練，以提高學員將來投入社會工作之能力。我們的多元化外展服務除了得到客戶的支持，更深受學員及家長的歡迎。我們會因應學員人數的增加，而增加服務及有關的訓練。

中心為協助學員將來更容易適應公開就業市場工作及

提高對客戶之服務水平，特別

將中心的服務時間伸延至黃

昏，以方便客戶。同工們本著

服務為先的精神，亦樂意輪更

及於夜班工作。學員得到同工

的鼓勵後，也有不少願意參與

安排於星期六及黃昏之工作。





EMV 專題

(續前頁)

我們很高興中心的同工們能高瞻遠矚，靈活地適應環境的變遷，更樂意見到各學員的積極參與。中心對人事管理及培訓亦十分重視，目標是每一位同工都能照顧學員的需要，給予支持及適切的工作訓練，並且對中心各項服務的推廣及質素提升都作出努力和承擔。我們並不憂慮中心於這個經濟不穩的年頭成立，只要各同工本著樂觀和積極的態度，去提供高質素的康復服務，定必可以讓學員「盡展所長、堅毅不移」。



▲ 乾濕洗衣服務



◀ 電腦資料輸入服務



▲ 復康訓練互動網站的同事(圖中)正準備介紹使用網站的方法

◀ 參加者對本會的互動網站很有興趣



EMV 動態

資訊科技管理研討會

本會參加了社會福利署於一月廿一日(星期二)在金城假日酒店舉辦的「社會福利界資訊科技管理研討會」，當日並設立了攤位即場介紹及示範本會的復康訓練互動網站及有關的輔助器材。當日參加者非常踴躍，並發問了很多有關如何使用本網站的問題，我們期望日後也能多參予此類活動，令更多社會服務機構認識及應用此互動網站。

新同事

本會增聘了下列多位新同事：

輔助就業服務

劉桂芳小姐 助理輔助就業主任

陳俊熙先生 助理輔助就業主任

梁玉嬋小姐 活動助理

展毅中心

張家樂先生 工場經理

羅慶偉先生 工場副經理

陳少茵小姐 社工

蕭愛梅小姐 營運主任

梁祖兒小姐 文員

吳世芬小姐 訓練助理

張中奇先生 訓練助理

蔡詠儀小姐 訓練助理

黎慕琴小姐 訓練助理

鄒碧英小姐 訓練助理

本會衷心祝福各人工作愉快！



◆ 職前培訓課程 ◆

為了改善殘疾人士失業情況，加強他們的求職技巧，本會輔助就業服務於本年五月份舉辦了「職前培訓課程」。課程為期四天，內容包括認識自我、分析勞工市場走勢、講解求職及面試技巧、工作態度等。是次共有五名學員報讀，希望此課程能有助他們日後求職之用。



特稿

汽車清潔及美容服務

本會之輔助就業服務不斷擴展，今期特稿將介紹他們最新的「汽車清潔及美容服務」。

汽車清潔及美容服務

鑑於近年汽車清潔及美容服務的需求不斷增加，本會在社會福利署康復服務市場顧問辦事處的統籌下，於二零二零年三月一日起於屯門區展開了汽車清潔及美容服務，除了滿足車主的需求外，亦為輔助就業服務的學員提供就業機會。



▲除車身外，車輪的部份亦會清洗妥當。

由於大部份的學員之前均沒有清潔汽車的經驗，因此負責的同事由去年十月已開始著手籌備訓練工作，由最基本的工序開始講解及教授。本會並提供多種服務計劃供車主選擇：

計劃	內容	普通私家車	中大型私家車
A	每週清洗車身2次 (每月加送打腊1次)	\$230/月	\$280/月
B	每週清洗車身3次 (每月加送打腊1次)	\$250/月	\$300/月
C	每週清洗車身5次 (每月加送打腊1次)	\$300/月	\$350/月
D	每週清洗車身6次 (每月加送打腊1次)	\$330/月	\$380/月
E	清洗車身1次+打腊1次	\$80/次	\$100/次
F	清洗車身1次	\$40/次	\$60/次

服務發展至今已有一定成績，直至四月底為止，已有二十四位車主惠顧本會之汽車清潔服務，他們對本會的服務亦非常滿意。

如有興趣惠顧此汽車清潔服務及任何查詢，或有個案轉介作訓練，歡迎致電2788 4248或2788 4472與輔助就業主任聯絡。



▲學員於洗車前會先以雞毛掃除去車上沙塵

家居照顧服務

馬

年來臨之際，服務隊於一月三十一日、二月四日及二月六日分區舉行「共慶新春」晚宴。大家藉此機會與各長者聚首一堂，喜慶團圓。參加的服務使用者超過二百名，他們在同工陪同下抵達酒樓，大家互相祝願來年身體健康，萬事勝意。之後，還安排了曲藝社的嘉賓演唱時代曲及粵曲，參加的長者亦與同工齊唱卡拉OK。除此以外，更設有抽獎及派發紀念品等等。

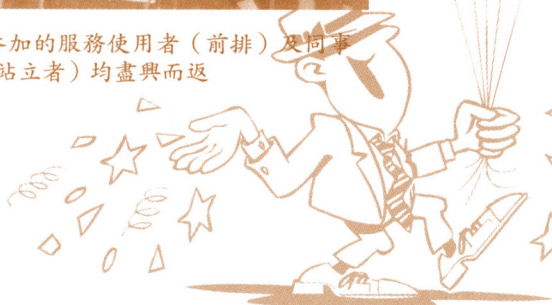
◆得獎的老人家歡天喜地接受隊長鄧姑娘的禮物



◆隊長丘先生頒發大獎予幸運長者



◆所有參加的服務使用者（前排）及同事（後排站立者）均盡興而返



歡天喜地賀生辰

三

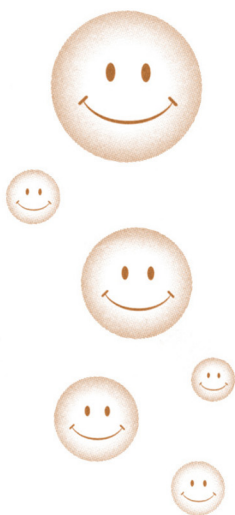
月九日，我們為農曆十一月、十二月及一月出生的服務使用者舉辦了動感派對，三十五位參加者在聖公會竹園馬田法政牧師長者綜合服務中心一同渡過了難忘的生辰。派對的節目豐富：合唱生日歌、切生日蛋糕、欣賞時代曲、演唱粵曲等。各參加者亦參與互相介紹和彼此祝福的集體遊戲，從而認識了不少新朋友。



◆每季舉行的生日會均極受服務使用者歡迎，參加的人數不斷增加。

義工招募

本服務隊現欲招募一些持有電工牌的義工，以協助獨居及有長期病患的長者作一些簡單的電器更換、裝置及維修。如你或你身邊的朋友有興趣參與成為義工，可致電 27768569 與區小姐聯絡。



聲音感應開關掣

這開關掣可接駁電腦，以成為一個輸入裝置，亦可操控單按式遊戲。它設有兩種功能可供選擇：(1) 鼓勵有言語障礙的使用者發聲；(2) 改善使用者的行為表現（如減少尖叫）。

只須將收音器置於使用者口部前端，使用者只須發出音量達預設的水平，即可啟動開關掣來操控單按式遊戲。預設的音量可按使用者的能力及訓練需要而調校。

若此開關掣用於改善使用者經常尖叫的行為，使用者只須安靜一段時段，即可啟動開關掣，即是說使用者若能保持安靜，便能繼續單按式的遊戲。

Sound and Silence Switch

This switch serves as an input device to computer. It can also be used to control single-switch-game. The device can serve two functions: (1) Set as a Sound Switch to encourage user's vocalization; or (2) Set as a Silence Switch to modify user's maladaptive behavior such as disinhibited screaming.

It is useful for those physical or mental handicapped people with speech problem. The switch can be used to play single-switch-game. To encourage vocalization, the switch is activated by sound at the pre-set threshold level. The microphone attached to the switch is placed in front of the user's mouth. The sensitivity of the switch can be adjusted to the desired level (threshold level) in accordance to user's ability and training needs.

Moreover, it can be used to build up user's adaptive behavior by decreasing maladaptive behavior such as disinhibited behavior. The switch is activated by a silence interval so that user can play the single-switch-game if one keeps quiet for a period of time without screaming.



個人警報系統

這個警報系統主要用來監察一些行動不便或有遊走病徵的個案，以防止因沒有照料下而導致的意外。這系統亦適用於院舍環境如安老院。一般院舍的晚間工作人員數目較少，因此，此系統可以發揮其監察功效。

這個警報系統是由一般市面上無線門鐘改裝而成。整個系統由三部份組成：感應繩、訊號發射器及無線接收警鐘。感應繩上有一夾子，可用來將感應繩固定於個案的衣衫上。當個案的活動超出感應繩的範圍，感應繩便會因脫離訊號發射器而啟動無線接收警鐘及發出警報。使用者能因應個案不同的情況而調較感應繩的長度。除此之外，無線接收警鐘可安裝於一些位置，使之能容易聽到及減低對其他服務使用者的滋擾。

若對以上兩個儀器有興趣或查詢，歡迎致電 2776 8569 與本會職業治療師鄭先生聯絡。

Personal Alarm System

This is an alarm system to prevent unsupervised activities of clients with high fall risk or wandering problems such as dementia. The system especially suits the demands of residential setting such as elderly home, which commonly has minimal staff on duty during night time.

The system is modified from a wireless doorbell, which consists of three parts: a sensor cord, a signal transmitter and a receiver alarm. The sensor cord has a clip, which clips on client's clothes. When the client moves beyond the predetermined distance, the sensor cord will detach from the transmitter and activate the alarm. Users can adjust the sensor cord length in accordance to needs. The receiver alarm can be installed anywhere that is not too far away from the transmitter but is able to alert the caregivers and lower the disturbance to others.

For further information about the devices, you can contact our occupational therapist, Mr. Cheng, at 2776 8569.



EMV News

Home Care Service

New Year Dinner Party

Dinner parties were held for service users of the three districts before the Chinese New Year. More than 200 participants joined these parties. They were escorted by our staff and arrived at the restaurant at about 4pm. Different programs, including Chinese opera and pop song singing, Karaoke, lucky draw and souvenir distribution, were arranged for them. All participants enjoyed a delightful night together.



◆ A service user was happy to win a prize in the dinner party.

◆ Mr. Tony Yau, the team leader, was presenting the prize to the lucky winner.



Birthday Party

The quarterly birthday party was held on 9 March at the Hong Kong SKH Chuk Yuen Canon Martin Multi-Service Centre for the Elderly. 35 participants gathered to celebrate their birthday. During the party, they sang pop songs and enjoyed the Chinese opera music together. The participants made new friends through participating in the group game. The cake cutting ceremony was arranged for them and all of them had an enjoyable time.



◆ The number of participants was increasing as it was welcomed by the service users.

Volunteers Wanted

Volunteers are needed to serve the elderly for simple maintenance, alternation and installation of electrical appliances. If you are a qualified person and are interested to serve the aged, please feel free to contact Miss Au at 27768569.



季刊與你 EMV Bulletin for You

請填妥回條寄回石硤尾邨四十四座平台 207-212 室，「工程及醫療義務工作協會」收。

Please fill in the form and mail to EMV, 207-212, Podium Floor, Block 44, Shek Kip Mei Estate, Kowloon.

☐ 本人希望加入貴會成為義工

☐ I want to join your Association as a volunteer.

☐ 本人願意捐助 \$ _____ 支持貴會工作
(支票抬頭為「EMV」)

☐ I wish to donate \$ _____ for supporting your Association
(the bearer of the cheque is "EMV")

姓 名 Name : _____

性 別 Sex : _____

職 業 Occupation : _____

電 話 Tel no. : _____

地 址 Address : _____

本會為政府認可的慈善機構，所有捐款可獲發免稅收據。

EMV is a registered charitable organization. All donation to us is tax deductible.



EMV News

Seminar on Information Technology (IT) Project Management for the Social Welfare Sector

Our Association participated in the seminar which was held on 21 January, 2002. The seminar aimed to introduce the application of IT in Social Welfare Sector. Our Association had set up a counter to demonstrate our i-net service and related rehabilitation aids. The participants were interested in the service and many questions were raised. Through the participation of this seminar, promotion of the i-net service could be made and enabled more agencies to know and join the service.



◆ Our colleague (centre) was preparing the demonstration session.

◆ Our colleagues introduced the i-net service to the participants.

New Colleagues

The following staff have joined our association in the past three months:

Supported Employment Service

Ms. Jocasta Lau	Assistant Placement Officer
Mr. Ronnie Chan	Assistant Placement Officer
Ms. Leung Yuk Sim	Program Assistant

The Endeavor

Mr. Cheung Ka Lok	Centre Manager
Mr. Law Hing Wai	Assistant Manager
Ms. Chan Siu Yan	Social Worker
Ms. Siu Oi Mui	Operation Supervisor
Ms. Leung Cho Yee	Clerk
Ms. Ng Sai Fan	Training Assistant
Mr. Cheung Chung Ki	Training Assistant
Ms. Choi Wing Yee	Training Assistant
Ms. Lai Mo Kam	Training Assistant
Ms. Chow Pik Ying	Training Assistant

We hope that they enjoy working with us.



Pre-Vocational Induction Course For Disabled Persons

In order to prepare and support people with disabilities to cope with possible difficulties encountered during job hunting, a "Pre-vocational Induction Course for Disabled Persons" was organized in May, 2002. The content of the course included the following: introduction of labour market condition, skills in job hunting and interview, appropriate work attitude etc. Five trainees participated in the course which would facilitate them in job searching in the future.



◆ Instructor (the middle one) is now teaching the trainees the job seeking skills.

由於篇幅有限，部份版位可能只可以中文出版，敬希見諒。

Due to the limited spacing, some columns may only be published in Chinese. We apologize for any inconvenience caused.



工程及醫療義務工作協會

Association for Engineering and Medical Volunteer Services

九龍石硤尾邨四十四座平台二零七至二一二室

No. 207-212, Podium Floor, Block 44, Shek Kip Mei Estate, Kowloon. Tel: 2776 8569 Fax: 2788 1194

Web-site: www.emv.org.hk E-mail: info@emv.org.hk

PRINTED MATTER



EMV Focus

The Endeavor – our Association's First Sheltered Workshop



Our first sheltered workshop, the Endeavor, which is subvented by the Social Welfare Department, has commenced operation in March 2002. The workshop, located in Fu Tai Estate, Tuen Mun, provides a variety of vocational training to 130 disabled trainees and up till now over 40 trainees were admitted. The aim of the workshop is to assist disabled trainees to overcome the difficulties caused by their disabilities and to develop their potential to the fullest extent. Various types of vocational training are provided and the ultimate goal is to facilitate them to integrate into the community.

The workshop is market oriented. The training provided is multifarious and can meet the demands of the open market. With the diminishing orders for low skills work such as packaging, skill training has to be provided to equip the trainees to compete in the open market. The following training programs are provided:

1. home and office cleaning
2. car washing
3. data entry and desktop publishing
4. banner production
5. laundry service
6. courier



Training is provided under a simulated work environment. Job orders are taken which can help the trainees to expose to the demands of the open market. The operation of the workshop is also market driven. For example, the opening hours of the workshop is extended to the evening which can provide greater convenience to our customers. This arrangement is welcome by the trainees, their families as well as the customers. With the growing number of trainees admitted, more training programs will be developed to suit their diversified needs.

Staff development is significant to upgrade the quality of service rendered to our disabled trainees. With the provision of appropriate training, the staff can be more sensitive to the needs of the trainees and proper services and training can be provided. Even though the workshop operates under an unfavourable economic situation, the staff team is confident

that sufficient training opportunities can still be secured for the trainees. They will strive to upgrade the quality of services rendered such that the trainees can benefit from the service and achieve the ultimate goal of integration into the community.

◆ Home cleaning service