

EMV Bulletin

工程及醫療義務工作協會
Association for Engineering and Medical Volunteer Services

會址：九龍石硤尾村四十四座平台二零七至二一二室

電話：2776 8569

傳真：2788 1194

季刊

九九年十月

October 99



EMV 專題

展能通訊 (弱能人士電子通訊網絡)

殘疾人士礙於個人體能上障礙，在與人溝通交往方面，往往遇到極大的困難。隨著電腦應用日漸普及，愈來愈多殘疾人士透過電腦網絡與外界聯繫。本會於一九八九年已開展一項名為「弱能人士電子通訊網絡」的服務。其主要目的如下：

- 一、鼓勵殘疾人士克服身體殘障，獨立地與其他人接觸、結交為友；
 - 二、透過接收各種形式的資訊，幫助殘疾人士與外界保持緊密聯繫；
 - 三、鼓勵殘疾人士學習及使用電腦；
 - 四、提高殘疾人士對資訊科技的認識，協助他們融入社會。
- 現時網絡系統是以內聯網 (Intranet) 的模式運作，並配合視窗環境，令畫面更生動有趣，更容易使用及可靠，仿如模擬現時的萬維網絡 (Internet)。此外，在傳送資料及信件時，速度亦較快，令使用者更有效地瀏覽網上資料及傳遞訊息。

現時的系統可容納五百個使用者使用，並能同時容納四位使用者進入。使用者可於每日早上七時至凌晨一時使用本系統，瀏覽網頁或透過電子郵件與外界通訊。除了一般的電子郵遞服務外，網絡系統更特別為使用者提供多元化的資訊網頁。而現時的資料分類包括每日報章、復康資訊、網上學堂、下載檔案、醫

學常識、消閒情報及相片畫集等。近期我們特別加強發展復康方面的資訊，滿足使用者的需要，內容包括社會資源、公共交通、機構活動、學習課程、勞工就業、復康服務、機構介紹及復康個案等。本會希望透過這些資訊，增加使用者了解現時社會為殘疾人士提供的復康資源，藉此鼓勵使用者與社會保持接觸，善用現有資源，並多參與社會活動；資料的內容亦會按使用者的興趣及需要而不斷更新及增加。

目前展能通訊的會員人數已超過二百名，當中有肢體傷殘者，痲痺人士及聽覺受損者。其中機構使用者佔了大多數，他們主要來自特殊學校、庇護工場、宿舍或醫院。此外，更有小部分參加者是健全人士。我們希望藉著這個網絡，提供機會讓殘疾及健全人士溝通。現時展能通訊的使用者大多對電腦認識不深，因此需要他們的導師指導學習使用。此外，本會希望透過廣泛宣傳，鼓勵更多殘疾人士及健全人士參與此項服務。在未來發展方面，本會亦會嘗試探討弱智人士使用網絡系統的情況，希望弱智人士也可學習應用電腦，與外界保持溝通，令他們不會落後於社會的大潮流。

任何復康機構或社會服務機構如有興趣參與我們的網絡系統，或有意使用我們的網絡系統來報導活動資料，可致電 27884472 與網絡負責人黃德成先生聯絡。☎



EMV動態

週年大會及 週年聚餐

本年度之週年大會將於一九九九年十一月廿六日(星期五)晚上六時半在溫莎公爵社會服務大廈舉行，而週年聚餐則緊接著週年大會舉行，聚餐以中式為主，於晚上七時半在香港醫學會舉行，歡迎各會員及義工出席。截止報名日期為一九九九年十一月十九日，費用為每位一百二十元。凡有興趣參予是次活動的朋友，可致電 27768569 與曾小姐聯絡。

「關懷獨居老人 服務計劃」

本會的「關懷獨居老人服務計劃」獲「青年事務委員會」撥款資助，已於本年六月完成第一期的服務計劃，共有二十八位義工參予計劃，探訪了黃大仙區內的三十八位獨居長者，義工除定期探訪長者，關心長者的日敘需要外，亦會為長者作簡單的身體檢查及向長者灌輸營養膳食的知識，並為有需要的長者教授簡單的復康運動，令長者能繼續留在社區內獨立地生活。新一期的服務計劃再次獲「青年事務委員會」資助，並已於九月尾進行有關之訓練課程，義工在完成課程後，會於本年十至十二月在觀塘及石硤尾區進行探訪。

退修營：

千禧展望及回顧

千禧將至，為了確定未來路向及方針，本會於六月五日(星期六)在薄扶林傷健中心舉行退修營，共有二十位委員及職員參加。上午部份為嘉賓講座，講者包括公益金執行董事陳達文先生、職業治療師李帶倫小姐及社會福利署高級社會工作主任麥林佩芳女士。下午部份為討論環節，內容圍繞 EMV 在廿一世紀的角色定位。經過一輪激烈的辯論後，整個活動於下午五時結束。

「社區職業治療」服務

本會之社區職業治療服務計劃，旨在協助康復者及長者改善肢體、精神及心理功能，提高他們在日常生活、家居、工作及社交方面之獨立生活能力，使他們能融入社區生活。

家居職業治療服務包括：

- 一、自我照顧及家居操作訓練
- 二、家居環境改建
- 三、設計及推薦輔助儀器
- 四、免費借用訓練及輔助器材

另外，本會亦舉辦專題教育講座及訓練，由職業治療師主講，講題主要配合機構之服務需要，建議講座內容包括：

- 一、腰背護理
- 二、扶抱技巧及輪椅使用須知
- 三、長者家居安全
- 四、長者簡易運動介紹

如對上述服務有興趣或有個案轉介，歡迎致電 27768569 與本會職業治療師梁姑娘聯絡。

《新同事》

本會新聘請何凱怡小姐為助理輔助就業主任，她在本年九月正式上任。在此除歡迎她加入我們的機構外，亦預祝她在新工作上勝任愉快。



職業治療師李帶倫小姐正與大家分享使用本會服務的感受。



一九九九

傑出義工

選舉提名

本

會的服務一向有賴義工們鼎力支持及參與。為表揚各位義工，我們將舉辦本世紀最後一個「傑出義工選舉」，獎項包括「積極服務獎」及「長期服務獎」。只要你是本會委員、會員、職員或義工，均有資格擔任提名人，提名人數不限。截止提名日期為十月底。如欲索取提名表格或查詢詳情，可致電 27768569 與區姑娘聯絡。

「長者家居護理服務」

招募義工

本

會將於本年十二月初開展一個「長者家居照顧服務」(Home Care Service)，此計劃由社會福利署撥款資助，旨在為有需要人士（特別是長者），提供家居照顧及護理服務，使他們能夠繼續留在他們熟悉的環境中生活。計劃內需要各位專業義工的參予，其中包括醫生、護士、職業治療師、物理治療師等，協助作評估及跟進長者的復康需要，以便安排本會的健康助理作跟進及訓練工作。現誠邀各義工協助此服務，如有興趣參予服務計劃或欲進一步了解服務詳情，可致電 27768569 與區姑娘聯絡。

義工活動

大棠荔枝山莊半天遊

秋

高氣爽，又是郊遊活動的好時機。本會將會為義工舉辦戶外活動，希望義工能踴躍參予，活動詳情如下：

日期：一九九九年十一月二十一日

(星期日)

地點：元朗大棠荔枝山莊

場內設施：迷你動物園、果樹教育徑、綠田園、迷你標本室、實驗農場、馬房及駝鳥場等

行程簡介：上午主要為參觀活動；午餐於山莊內享用盤菜

費用：每位一百元（午膳費，車費自備）

集合時間：上午九時正

集合地點：元朗

查詢及報名：區姑娘（電話：27768569）

歡迎投稿

本

刊之義工園地是專為義工而設，主要是報導一些義工動態，本版亦歡迎義工投稿，分享義工的喜與樂，互相交流心得，來稿約八百字為合，可用筆名，但需連同真實姓名、聯絡電話以及地址寄予本會「ENVY 季刊」收。凡刊登之文章，均獲致送紀念品一份。

電動輪椅

檢查及維修服務

本

會為電動輪椅使用者及復康機構特設「電動輪椅檢查及維修服務」。成為是項服務之會員即享有每年兩次免費電動輪椅檢查及維修服務，並可即日取回輪椅。會員年費一百二十元，歡迎加入。如有興趣及查詢可聯絡本會職員。

【鳴謝各界捐助】

承蒙 美國婦女會慷慨捐出港幣一萬五千八百元予本會購買一部輕觸式電腦顯示屏及鑿坊機，以協助本會發展復康軟件及生產特製木椅、其他木製家具及訓練儀器之用，特此致謝。

承蒙 Sadhu Vaswani Centre 捐助港幣一千四百七十八點四元予本會的「關懷獨居老人服務計劃」，善款全數撥作購買營養奶粉給受助之獨居老人。該會成員聯同黃大仙家務助理隊及本會負責同事已於五月十八日探訪十多名老人，並將奶粉送到他們手上。

今期我們特別介紹了幾款不同的開關掣，可配合不同程度的殘疾人士作電腦輸入及開關之用。

若對上述儀器有查詢或訂購，可致電 27768569 與本會職業治療師梁姑娘聯絡。

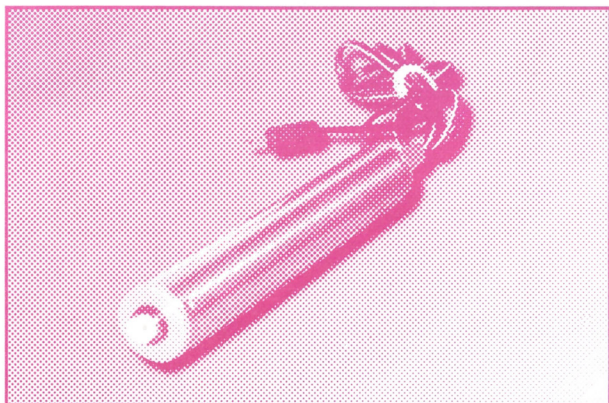


拇指開關掣

Thumb Activated Switch

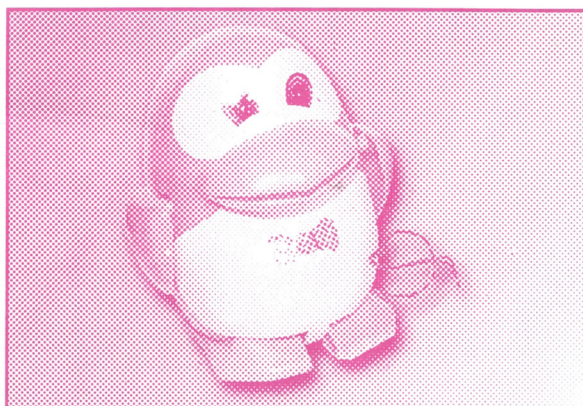
形狀為棒形，只需按下端按鈕便能控制開關。可配合改裝玩具、素描顯示鍵盤及電腦等，以訓練拇指活動能力。

It is activated when the button at the top of the stick-shaped switch is being pressed. It can be used as a training aid for thumb movements and also an input device for computer, scanning keyboard and adapted toys, etc.



改裝玩具

Toy Adaptation



裝有特別插頭，可配合開關掣使用。手部功能有限的學員也可以容易操控，更可藉以訓練手部功能。

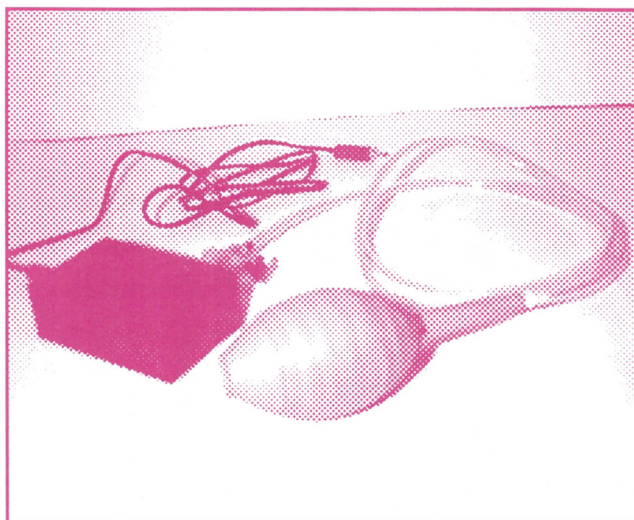
Toys with single on/off switches are adapted with sockets added. They can then be operated with adaptive switches. Adapted toys are most beneficial for people with limited hand function, either for training or just for entertainment.

手泵式開關掣

Pump Switch

握緊手泵作控制，可用以練習手握能力，亦可接駁到電腦及改裝玩具使用。

The switch is activated when the pump is being squeezed. It can be used as a training aid for spherical grip, and can be used with computer and adapted toys.





Product Review

We would like to introduce different switches which can be used as input devices for computers and other equipments. They are suitable for people with different levels of disability.

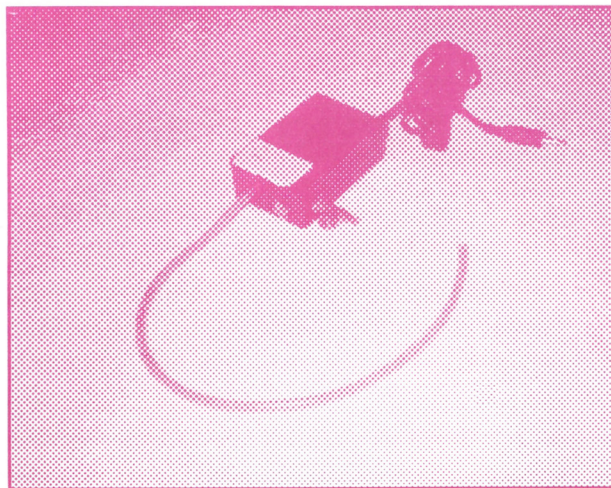
All devices mentioned below can be fabricated by EMV. For more information, please feel free to contact our Occupational Therapist Ms Leung at 27768569.

吸吹式開關掣

Suck and Blow Switch

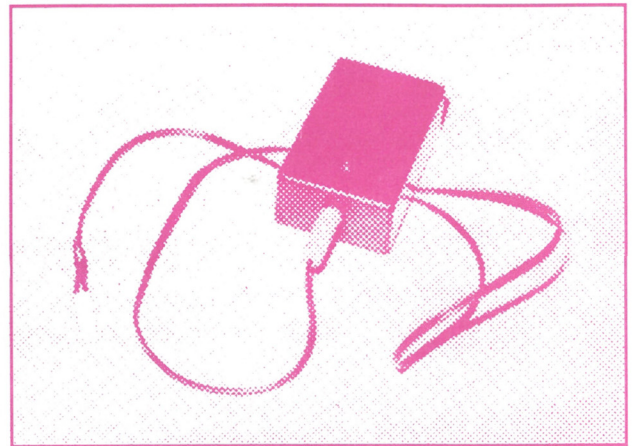
透過吸氣和吹氣來控制開關。可作輸入器以配合電腦、素描顯示鍵盤及改裝玩具等使用。

It is an input device activated by sucking and blowing actions through a rubber tube. It can be used as an input device for computer, scanning keyboard and adapted toys, etc.



地心吸力開關掣

Tilt Switch



內置水銀，傾斜十五度或以上便能控制開關。對於監測學員身體有否不自主活動甚有幫助，亦可配合電腦、改裝玩具等一併使用。

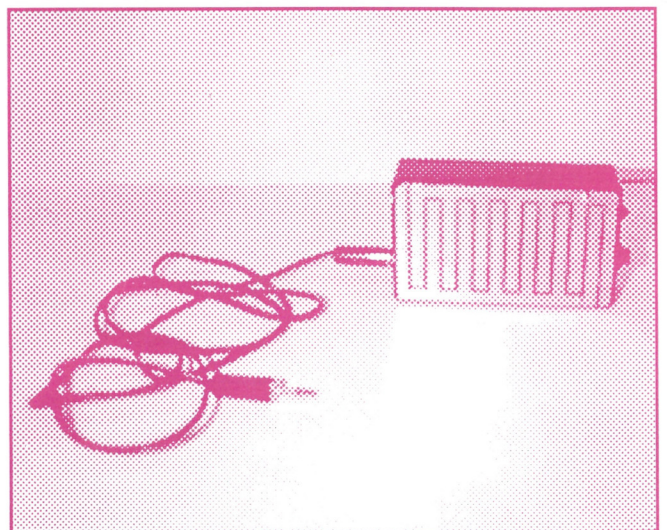
It is activated by tilting action. It can be used as a sensor to detect involuntary movements when that body part moves up to a certain angle. It can also act as an input device for adapted toys and computers.

輕解式開關掣

Touch Switch

只需用手輕觸開關掣頂部之金屬片，便能控制開關。可作輸入器，以配合電腦及改製玩具等使用。

The switch is activated by light touch on the metal plate. It can be used as an input device for computer and adapted toys, etc.





Vote! Outstanding Volunteer Award 1999

The Outstanding Volunteer Award is held with a view to recognize the devotion of the volunteers to our service. If you are the executive committee members, members or volunteers of EMV, or members of our staff, you are eligible to act as a nominee. The deadline for nomination is at the end of October, 1999. Please contact Ms Au at 27768569 for details.

* * * * *

Care for the Elderly Living Alone Project

With the sponsorship from the Commission On Youth, more than 20 young and energetic volunteers were recruited for the "Care for the Elderly Living Alone Project". An intensive training course, which included topics on geriatric illnesses, home safety and rehabilitation activities for elderly, was provided for the volunteers. After that, volunteers were paired up to visit the elderly who are living alone in Wong Tai Sin District regularly. During the home visit, simple medical check up was conducted and the volunteers would also pay concern to their daily living. We hope that this project can let the elderly living alone feel a sense of care and concern from the society.

Volunteer Activity

Dai Tong Lychee Villa Tour

Autumn will be a good time for outdoor activities, we will organize an outdoor activity for our volunteers. Details are as follows:

Date: 21 November, 1999 (Sunday)
Venue: Dai Tong Lychee Villa Tour, Yuen Long
Establishment: Mini Zoo, Fruit Tree Path, Green Farm, Mini Specimen Showroom, Experimental Farm House, Horse Stable and Ostrich Park, etc
Itinerary: Touring and sightseeing in the AM session; lunch at the Villa
Fare: \$100 each (excluding transportation fee)
Meeting Time: 9:00am
Meeting Place: Yuen Long
Registration: Ms Au (Tel no.:27768569)

* * * * *

Service Wanted

EMV's Technical Aids Services for the Disabled (TASD) and Computer Aids Services for the Disabled (CASD) volunteer groups can assist rehabilitation agencies and individual disabled person to design and fabricate technical and computer aids so as to enhance their independence in all aspects of their living. If you or your clients had this service need, please feel free to contact our Occupational Therapist. We will convey your ideas to our volunteers to explore the feasibility in designing appropriate rehabilitation aids.

季刊與你 EMV Bulletin for You

請填妥回條寄回石硤尾村四十四座平台 207-212 室，工程及醫療義務工作協會收。

Please fill in the form and mail to EMV, 207-212, Podium Floor, Block 44, Shek Kip Mei Estate, Kowloon.

☐ 本人希望加入貴會成為義工

☐ I want to join your Association as a volunteer.

☐ 本人願意捐助 \$ _____ 支持貴會工作
(支票抬頭為「EMV」)

☐ I wish to donate \$ _____ for supporting your Association
(the bearer of the cheque is 'EMV')

姓 名 Name : _____

性 別 Sex : _____

職 業 Occupation : _____

電 話 Tel no. : _____

地 址 Address : _____

本會為政府認可的慈善機構，所有捐款可獲發免稅收據。

EMV is a registered charitable organization. All donation to us is tax deductible.



Annual General Business Meeting & Annual Dinner

The Annual General Meeting will be held on 26th November 1999 (Friday) at 6:30pm at the Duke of Windsor Social Service Building. The Annual Dinner, in Chinese style, will be held after the AGM at the Hong Kong Medical Association. The charge is HK\$120 per person. Members and volunteers who are interested to join this function, please registered before 19th November 1999 by contacting Ms. Tsang at 27768569.

* * * * *

Corporate Strategy Workshop

Twenty executive committee members, volunteers and staff members attended one Retreat Camp held on 5th June, 1999 at the Lady MacLehose Pokfulam PHAB Camp. Mr Chen Tat Man, Executive Director of the Community Chest, Ms Lee Tai Lun, one of our service users and Mrs Mak Lam Pui Fong, Senior Social Work Officer, SWD were invited to deliver a speech in the morning session which focused on the service recipients' and stakeholders' expectation on EMV. In the afternoon session, there was a hectic discussion on the direction and status of EMV in the 21st century. The workshop rounded up at 5pm.



■ Our Chairman welcomed and thanked Mr Chen Tat Man, the Executive Director of the Community Chest, for his coming to our Corporate Strategy Workshop.

Generous Donations from Various Organizations

The American Women's Association (AWA) donated HK\$15,800 for the purchase of a MicroTouch Touch Screen Input Device with monitor and a Hollow Chisel Mortiser AP-15 which is used for the development of rehabilitation software and in the production of rehabilitation equipment. Thank you for their generous donation.



■ Visitors from AWA were being introduced of our latest production in technical aids.

The Sadhu Vaswari Centre (SVC) has donated HK\$1,478.4 in support of our Care for the Elderly Living Alone Project. The sum was used to purchase 38 cans of powder milk for the elderly living alone in Wong Tai Sin. They were delivered by the members of the SVC, the Wong Tai Sin Home Help Team and our staff in May.



■ One of the representatives of the SVC was delivering the powder milk to the elderly.

New Colleague

Ms. Ho Hoi Yee, June, has joined the Association as Assistant Placement Officer (Supported Employment Service) from September this year.



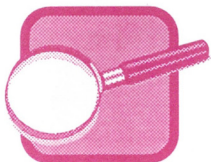
工程及醫療義務工作協會

Association for Engineering and Medical Volunteer Services

九龍石硤尾村四十四座平台二零七至二一二室

No.207-212, Podium Floor, Block 44, Shek Kip Mei Estate, Kowloon. Tel:2776 8569 Fax:2788 1194

PRINTED MATTER



EMV Focus

Electronic Communication For the Disabled

Due to the physical limitations, disabled persons often encounter problems in communication. As a result of the advancement in information technology, more and more disabled persons can have the chance to make contact with the outside world through computer network. 'Electronic Communication for the Disabled', a service introduced by our Association in 1989 is set up with a view to :

1. Encourage the disabled persons to make contact with the outside world and communicate with others regardless of their disabilities;
2. Help them to maintain close connection with the outside world through access to a variety of information;
3. Encourage them to learn and use computers;
4. Enrich their knowledge on technology so as to facilitate them to integrate into the society.

The new system, which is under the Intranet mode of processing, not only creates a more lively and interesting screen, but is also easier to use and more reliable. Besides, the speed of sending information and messages is faster, thus making surfing and searching more effective.

The system can accommodate a maximum of 500 users, during which four users are allowed to enter the system at one time. Users can visit the homepage or communicate with the outside world through e-mails daily from 7am to 1am. Apart from e-mail transmission, the network system also provides multifarious information to users such as daily news, rehabilitation information, web class, shareware download, general medical knowledge, recreational activities, leisure news and photo album. In

response to the needs of the users, emphasis is put on the provision of rehabilitation information. Such information includes social resources, transportation guide, activities of related organizations, courses and workshops, employment, rehabilitation services, introduction on rehabilitation organizations and rehabilitation cases. Hopefully, the users can have a better understanding of rehabilitation resources available in the society. They can also keep in touch with the society and utilize the resources available. The content of information will be updated in accordance to the users' interest and needs.

Currently, the Electronic Communication for the Disabled has more than 200 members. They include people with physical disabilities, cerebral paralysed and hearing impaired persons. Among these members, agency users make up the majority. They mainly come from special schools, sheltered workshops, hostels and hospitals. Besides, a small number of participants are able-bodied. Through this network, people with or without disabilities are given the opportunity to communicate with each other. As most users are not experienced computers users, they must rely on their instructors' guidance. In the future, we would try to explore the feasibility of mentally handicapped users to join and utilize this service. This can provide an opportunity for them to familiarize with the computer operation which is becoming increasingly popular and common and maintain connection with the outside world.

Any rehabilitation organization or social service agency who is interested in participating in our new network system, or would like to make use of our network system to broadcast its activities, please contact Mr William Wong, the Network Manager at 27884472. ☎