

EMV Bulletin

工程及醫療義務工作協會
Association for Engineering and Medical Volunteer Services

會址：九龍石硤尾村四十四座平台二零七至二一二室

電話：2776 8569

傳真：2788 1194

季刊

九八年十月

October 98



展能基金

本會「展能基金」成立於一九九〇年，主要是以免息貸款形式向經濟上有困難的殘疾人士提供經濟援助以購買輔助器材，藉以協助他們過獨立生活，並提高其個人生活質素。

現時「展能基金」的申請者包括各類殘疾人士，其中以肢體殘疾者及視覺受損人士佔大多數，而購買的輔助器材亦以外地製造而透過本地訂購居多，其中主要包括輪椅、電動輪椅、盲人點字器、改裝汽車及電腦設備，而大部份的輔助器材都用於協助殘疾人士在日常生括、學習、訓練及治療等方面的需要。

在貸款形式方面，現時最高的貸款額為港幣伍萬元正，最長還款期為四十八個月，每月之還款額視申請人之經濟情況而定，申請人需按月清還所貸之款項。此外，每一申請均需要有擔保人。申請人在遞交表格後，本會將安排約見申請人，以証明欲購買之輔助儀器有助於申請人過獨立生活。所有申請將交由展能基金管理委員會審核並交由本會執行委員會通過。

在不同的申請個案中，曾有兩個輕度弱智的申請者，她的母親透過申請展能基金，為他們購置了一部電腦，令他們可學習鍵盤的操作，並且可透過電腦，學習英文及繪圖，藉此提高他們的學習興趣及增強認知能力。在失明及弱視的申請者當中，以申請購買盲人點字



盲人點字器及助聽器是其中兩樣殘疾人士申請購買的輔助器材。

器為主，這部價值超過四萬元的儀器，透過接駁電腦，能令失明人士「閱讀」電腦上的資料，配合電腦軟件的使用，失明者也可瀏覽網上的文字訊息，享受上網的樂趣。從不同的個案來看，大部份的申請者都希望透過申請免息貸款，購買自己所需的輔助器材，以作學習及生活上的需要，他們都希望倚靠個人的能力去達致獨立生活及改善生活質素，而不希望倚賴政府的津助。

基金自成立以來，已有百多位殘疾人士成功地申請到所需款項，而截至九八年三月，總貸款額亦已接近三百萬元。在本年八月，「展能基金」再獲得「余兆麒殘疾人士基金」慷慨捐助港幣一佰萬元正，在獲得這項資助後，相信有更多殘疾人士能受惠，透過免息貸款購置所需輔助器材，令他們更有能力過獨立生活，並提高個人生活質素。

基金歡迎各復康機構轉介適合的個案，有需要申請之殘疾人士亦可直接致電本會索取表格，如欲了解詳情，可致電 2776 8569 與區小姐聯絡。



週年大會及 週年聚餐

本 年度之週年大會將於一九九八年十一月六日（星期五）晚上六時半在溫莎公爵社會服務大廈舉行，而週年聚餐則緊接著週年大會，於晚上七時半在香港醫學會舉行，歡迎各會員及義工出席。凡在興趣參予是次活動的朋友，可致電 2776 8569 與曾小姐聯絡。

美國婦女會捐助購買器材

本 會獲美國婦女會捐助港幣壹萬七千八百元正，購買器材以製作殘疾人士輔助儀器，以及購置復康用品借予長者及傷殘人士作康復及訓練之用。在此多謝她們慷慨的捐助。

「展能通訊」電子網絡系統

招募會員

本 會「展能通訊」電子網絡系統為一內聯網，主要為殘疾人士提供各項資訊及電子郵件通訊服務，現有超過二百個會員，其中包括復康機構會員及個別殘疾人士及健全人士。參加者可以個人或機構名義參加，凡有興趣了解或參予本網絡系統，可致電 2788 4472 與網絡負責人黃先生聯絡。

「家居職業治療」服務



■ 本會的職業治療師正為長者提供家居職業治療服務。

本

會之家居職業治療服務，旨在協助病者改善肢體、精神及心理功能，提高他們在日常生活、家居、工作及社交方面之獨立能力，使他們能融入社區生活，服務範圍包括：

- 一、家居生活技能評估及訓練
- 二、社區生活技能評估及訓練
- 三、改善家居環境
- 四、設計及推薦輔助器材
- 五、免費借用訓練及輔助器材（新服務）
- 六、提供及轉介合適社區資源和服務
- 七、提供健康教育

歡迎各機構轉介個案至本會職業治療師作個別跟進。如有任何查詢，可致電 2776 8569 與本會職業治療師聯絡。

新同事

本 會新聘請歐陽漢雯小姐為助理輔助就業主任，她在本年九月正式上任。在此除歡迎她加入我們的機構外，亦預祝她在新工作上勝任愉快。

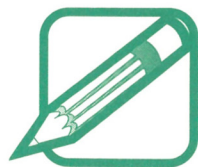
中文桌面排版課程

本 會將推出新一期之「中文桌面排版課程」全期課程共十八堂，主要教授蘋果系統的基本操作、編輯及排版入門、桌面軟件的基本應用等。參加者必須為殘疾人士，具初中程度，視力良好、手部靈活，適合較長時間安坐工作，並懂倉頡輸入法。上課地點為石硤尾，如有需要，本會並會安排交通接送。此課程費用全免，由於名額有限，凡有志從事電腦資料處理工作的殘疾人士，歡迎致電 2788 4472 與黃先生聯絡。

如你身邊有任何殘疾朋友有興趣報讀此課程，請你將此消息傳遞予他／她，讓他們能掌握一技之長，以找尋更理想之工作。

義工招募

本 會「展能通訊」電子網絡系統欲招募義工協助設計網頁，凡略懂網頁設計及有興趣參予義務工作，可致電 2788 4472 與黃先生聯絡。



特稿

在

今期刊物中，我們邀請了一位僱主執筆，講述他聘用本會「輔助就業服務」轉介的精神病康復者的感受，希望一方面讓社會人士了解僱主對輔助就業服務的看法，另一方面，亦體會僱主在聘用殘疾人士時所面對的一些困難。



北斗精神

郭先生

八月上旬，接到趙先生來電，謂可否在其季刊中，報道一下有關於其中心服務的看法及感受。年多來，多得「輔助就業服務」的趙先生大力幫忙，故今次義不容辭，一口便答應了。

本人開設一間小規模的花店，已有十多年了。一向以來對聘請送花員都感到非常懊惱，有責任感的，就做得不長，不然一、二天就辭職，大大話話都請過五、六十人之多。

因有一次在報章上刊登聘請送花員廣告，得趙先生來電，介紹其中心的服務，並可為花店介紹員工。本人起初有點兒戒心，因他所介紹的員工本質上是無任何問題，如普通人一般，但實質上心靈或肉體都經歷過挫折，甚至說是「精神」上有問題。但想深一層，只要其工作交得準，無大錯誤，對顧客有禮貌便可。而且花店所付出的薪金又不是那麼高，故之然要求就不要那麼高吧！因此就嘗試接受趙先生的安排。

經趙先生安排見工的員工，事前已按著本人的要求而作篩選。第一位安排到花店工作的是一位中年婦人，與丈夫及家庭上出現問題，引致精神緊張和情緒不定。開始時趙先生已經詳細講述她的情況及背景，因此我就因著她的情況，加以特別對待，與一般員工截然不同。但不到兩個星期，她經常因情緒不佳而曠工。其後得到趙先生聯絡，說服她回到花店工作，本來少一個員工，或另請一個新幫手並不困難，不過本人敵不過趙先生的毅力，不斷地作出游說，希望我給予她機會。可是，一次又一次的機會她也沒有珍惜，最後，這位員工終於離去。

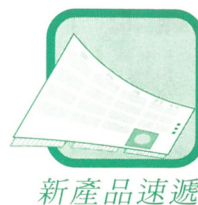
這個經驗令我感覺到這位員工肯答應趙先生到花店工作，只不過是敷衍趙先生，其最終目的是希望趙先生能幫她申請綜合保障。但如

有工作做，又怎能申請到綜合保障呢？所以，她在工作上只是敷衍了事，稍有不如意，便放棄工作，而去領取綜合保障。

趙先生鍥而不捨的精神，令本人頗為感動。他不斷地介紹需要幫助的人來見工，本想一口拒絕他的好意，但經趙先生耐心的解釋說：「如果可以幫助一個人有工作做，精神上有所寄託，能重新投入社會，真不失為一件好事呢！」終於又接受了另一位由趙先生介紹到花店工作的精神病康復者了。

經過上一次的經驗，這次教我不要那麼緊張他，像普通員工的看待。趙先生可謂盡忠職守，初時陪伴他一同返工，甚至陪同他一同送花，一時又打電話來查問一下他的情況，有時更抽空來探望他。兩三個月來他的工作表現可算得頭頭事道，而且頗為盡責，相處期間更有講有笑。雖然仍有兩、三次因精神低落，無原無故不動聲色的消失，每次都經由趙先生勸服他回來花店工作，直至現在，他仍然在花店工作，但卻不知道可維持多久呢？

後註：本會的輔助就業服務是特別為肢體傷殘人士及精神病康復者提供就業上的輔導，服務名額有四十個。如各機構有適合的人選，可轉介予本機構，詳情可聯絡本會負責同事林姑娘 2776 8569、趙先生 2788 4248 或歐陽姑娘 2788 4472。 ↙



新產品速遞

復康輔助器材

在 本期通訊，我們會介紹幾款適合長者及殘疾人士作鍛練上肢之用的輔助器材：

一、連環棋 (Catch Four)

連環棋可改善手部的活動能力，並可加強手眼協調、顏色辨認及認知的能力。

二、螺絲板 (Bolt Board)

螺絲板可改善單手及雙手的協調，亦能加強手部作精細操作的能力。

三、滑輪 (Overhead Pulley)

滑輪主要是改善中風者的活動能力，中風者可使用較強的手臂去伸展較弱的手臂，此外，滑輪亦可作用訓練單手之用。

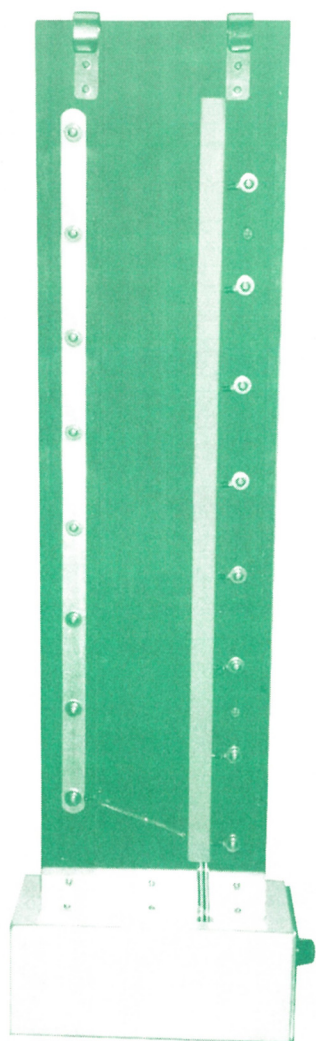
四、斜板 (Incline Board)

斜板能置於不同角度，使用者可以單手或雙手推動重量盒。這儀器能改善活動的範圍及增強上肢的活動能力，並且可鼓勵多使用雙手。

五、肩膊板 (Shoulder Board)

肩膊板能改善上肢的活動能力，如加強推動棍的重量可增加推動時的阻力，藉以增強肩膊的活動能力。

上述所介紹的各類儀器均可向本會訂製，如需了解詳情，可致電 2776 8569 與本會職業治療師聯絡。



■ 肩膊板



■ 滑輪



New Product Express

Rehabilitation Equipment

In this issue, we are going to introduce some devices for use in upper extremity exercise activities. It is suitable for elderly or disabled persons for training and rehabilitation purposes:

1. Catch Four

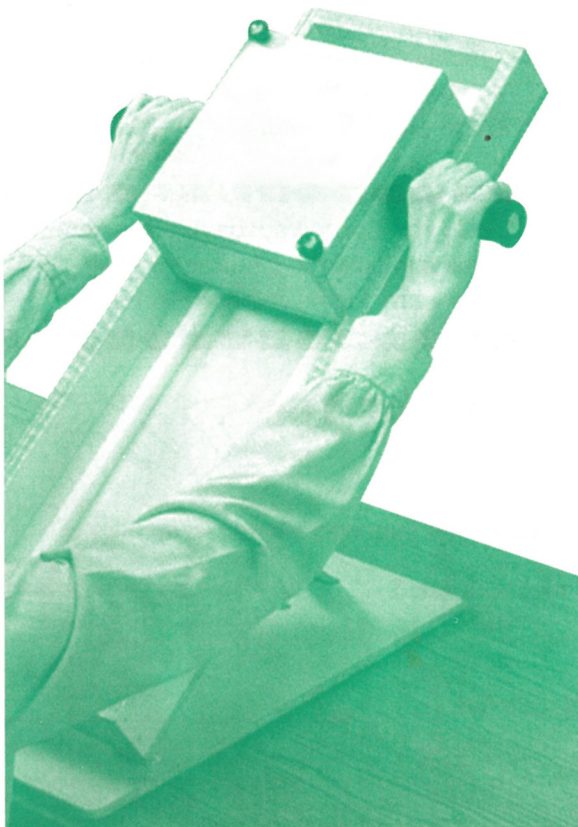
Catch four is ideal for improving reaching and grasping, eye-hand coordination, color, identification and perceptual ability.

2. Bolt Board

The bolt board is good for improving the unilateral and bilateral motor coordination. It also enhances precise manipulation skills.

3. Overhead Pulley

Overhead pulley is ideal for improving range of motion for persons with CVA. The stronger arm pulls the affected arm up in stretching motions. It can also be used for one-handed exercise.



■ Incline Board

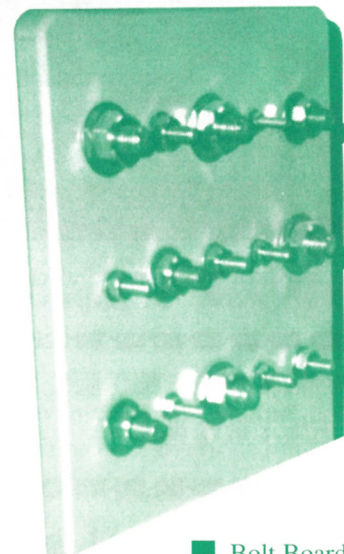
4. Incline Board

The incline board can be positioned at varying angles. The weight box can be moved with one hand or both. It is ideal to improve the range of motion and strength of upper extremity and to promote bilateral hand use.

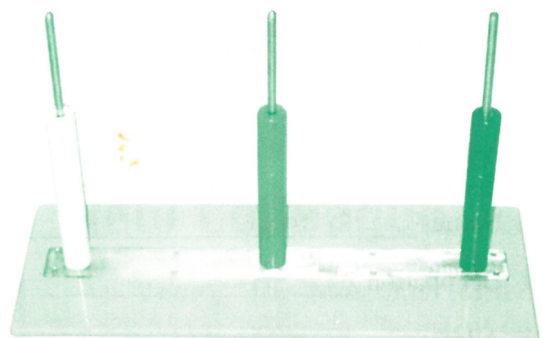
5. Shoulder Board

The shoulder board improves range of motion of upper extremity. Adding cuff weights to the dowel and increases resistance for strengthening programme.

All devices mentioned above can be fabricated by EMV. For more information, please contact our occupational therapist at 2776 8569.



■ Bolt Board



■ Catch Four



'Music Farm' Fun Day

A 'Music Farm' Fun Day for our volunteers were held on 12th July 1998 (Sunday). The schedule on that day was tight. The volunteers engaged in various kind of activities such as ceramics, leather making, baking of home-made bakery and stone painting. In the evening, the volunteers enjoyed the beautiful sunset and the Kam Tin scenery. After that, we had a BBQ dinner buffet in the farm. The activity ended after the singing and games arranged by the Music Farm.

* * * * *



■ Volunteers enjoyed a BBQ dinner buffet in Music Farm.



■ We enjoyed the sunset and beautiful scenery here.

The Volunteer Station is mainly set up for our volunteers and to report events which are related to them. The Station welcome our volunteers to share their volunteer experience. You can send in your script to us in English or Chinese. Expected length is around 800 words. You can choose to use pseudonym. Please send in your contribution with real name, day-time contact telephone number and correspondence address to 'The Editor, EMV Bulletin'. As a token of appreciation, a souvenir will be presented to the contributor.

由於篇幅有限，部份版位可能只以中文／英文出版，敬希見諒。

Due to the limited space, some columns can only be published in Chinese/English. We apologize for any inconvenience caused.

季刊與你 EMV Bulletin for You

☐ 本人希望加入貴會成為義工

I want to join your Association as a volunteer.

☐ 本人願意捐助 \$ _____ 支持貴會工作

I wish to donate \$ _____ for supporting your Association

姓名 Name : _____

性別 Sex : _____

職業 Occupation : _____

電話 Tel no. : _____

地址 Address : _____

所有捐款可獲發免稅收據。

All donation to us is tax deductible.



EMV News

Annual General Business Meeting & Annual Dinner

The 14th Annual General Meeting will be held on 6th November 1998 (Friday) at 6:30pm at the Duke of Windsor Social Service Building. The Annual Dinner will be held immediately after the AGM at the Hong Kong Medical Association. Members and volunteers who are interested to join this function, please contact Ms. Tsang at 2776 8569.

* * * * *

Community Occupational Therapy

Our Community Occupational Therapy (COT) Service aims to assist disabled persons and elderly to improve their physical, mental and psychological functioning. The service can enhance their independent living abilities in daily living, home/work environment and social life so that they can continue living in the community. The service provided include the following aspects:

1. assessment & training on activities of daily living;
2. assessment & training on community living skills;
3. home/workplace adaption;
4. design & recommendation of rehabilitation aids;
5. rehabilitation aids on loan service;
6. referral for community resources;
7. provide health education.

Referrals for service are welcome. For more information, please contact our occupational therapist at 2776 8569.



■ Our occupational therapist provided COT service for an elderly.

Donation from American Women's Association (AWA)

The AWA had donated HK\$17,800.00 to our Association to purchase equipment for the fabrication of technical aids and to purchase rehabilitation equipment for loan to the clients of our Community Occupational Therapy (COT) Service. Thank you for their generosity.



■ The committee member of AWA visited our rehabilitation aids workshop.

Electronic Communication for the Disabled Recruitment of New Members

Our E-Mail system is a 'Intranet' network which is similar to Internet and operate under windows environment. It provides various kind of information and electronic mailing service to disabled persons. Presently, there are over 200 members including members of rehabilitation agencies and individual disabled persons as well as able bodies. The participants can join on agency or individual basis. If you or your agency are interested to join our system, please contact Mr. William Wong at 2788 4472.

* * * * *

New Colleague

Ms. Au Yeung Hon Man had joined the Association as Assistant Placement Officer (Supported Employment Service) from September this year.



工程及醫療義務工作協會

Association for Engineering and Medical Volunteer Services

九龍石硤尾村四十四座平台二零七至二一二室

No.207-212, Podium Floor, Block 44, Shek Kip Mei Estate, Kowloon. Tel:2776 8569 Fax:2788 1194

PRINTED MATTER



EMV Focus

Independent Living Fund

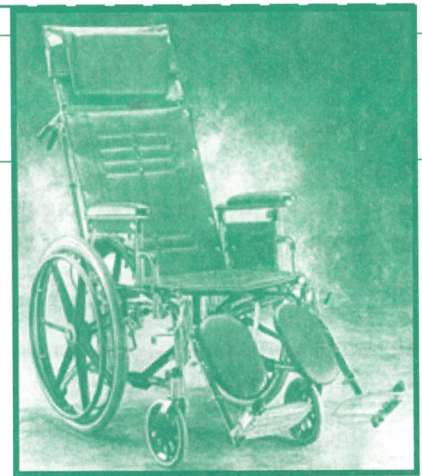
The Independent Living Fund was first established in 1990.

The main purpose of the Fund is to provide interest free loan to individual disabled persons who do not have the financial means to purchase rehabilitation aids. The ultimate goal is to enhance their independence as well as their quality of life.

Applicants of the Fund include all types of disabled persons and majority of them are physically handicapped and visually impaired persons. The rehabilitation aids they applied to purchase are mainly imported which include manual and electric wheelchair, power braille, computer and hearing aids etc.. These devices can help to enhance the independence of disabled persons in various aspects of their daily living such as mobility, training, education and treatment.

At present, the maximum loan amount is HK\$50,000 and the longest repayment period is 48 months. The amount of repayment is determined by taking into consideration the financial situation of the applicant. The loan is to be repaid by monthly instalments. In addition, a guarantor is required for each application. Each applicant has to attend an interview to examine the eligibility of his/her application. The Management Committee of the Fund will make recommendations on all applications which will then be endorsed by the Executive Committee of the Association.

Amongst all these applications, two mild grade mentally handicapped persons applied for loan to purchase computers and accessories. With the use of computer, they are more motivated to learn which, in turn, can enhance their cognitive abilities. Their knowledge in English and graphic design are also enriched. There are quite a number of visually impaired



■ Independent Living Fund provides interest free loan to disbled persons to purchase rehabilitation aids.

persons who applied for loan to purchase powerbraille. This equipment, costs over \$40,000, can be connected to the computer which enables visually impaired persons to 'read' information on the computer. With the use of relevant software, they can also surf the net. Majority of the applicants expressed their desire to acquire these needed equipment through their own effort instead of relying on public funding as far as possible.

Since the commencement of operation of the Fund, over 100 applications are approved. Up till March 1998, the accumulated loan amount has reached HK\$3 million. In August 1998, the S. Y. Yee Fund for the Disabled had injected HK\$1 million into the capital of the Fund. With the availability of this new money, more disabled persons can benefit from the Fund.

The Fund accepts referrals from social service agencies. Individual disabled persons can also directly contact our Association for information on the Fund. For enquiries, please contact Ms. Au at 2776 8569. ✉