



工程及醫療義務工作協會

Association for Engineering and Medical Volunteer Services

專業技能 · 服務人群

The Association for Engineering and Medical Volunteer Services was established in 1982 as a non-profit social service organization. The Association is composed of volunteers from engineering, medical, auxiliary medical, and other professional fields, with the mission of "Social Servicing is Our Object, Professional Volunteering is Our Way". We provide three main categories of services, including vocational rehabilitation services, elderly services, and community rehabilitation services, with the goal of enhancing the independent living abilities of people with disabilities and the elderly, and improving their quality of life.

*Social Servicing is Our Object,
Professional Volunteering is our way*



社會福利署資助服務



職業性失聰補償管理局



機構會員



香港公益金
THE COMMUNITY CHEST
會員機構 MEMBER



香港賽馬會慈善信託基金
The Hong Kong Jockey Club Charities Trust
同心同德 RIDING HIGH TOGETHER

Vocational Rehabilitation Services



Supported Employment Training for Persons with Disabilities

Provide pre-employment assessment, skills training, job internships, job matching, counseling, and on-the-job support for people with disabilities, enabling them to reintegrate into the open job market and become self-reliant.

Shek Kip Mei Office

Address: Unit No. 2, G/F, Tung Lung House,
Tai Hang Tung Estate, Kowloon
Tel: 2788 4749 Fax: 2788 4088

Tuen Mun Office

Address: G/F, Sau Tai House,
Fu Tai Estate, Tuen Mun, NT
Tel: 3157 1792-3 Fax: 3157 1784
Email: ses@emv.org.hk



Integrated Vocational Rehabilitation Service Centre – The Endeavor

Provide comprehensive vocational rehabilitation services for people with disabilities. Through simulated work environments, the centre offers appropriate job trainings with the aim of assisting individuals with disabilities in transitioning to supported employment or open employment, enabling them to integrate into society.

Address: G/F, Sau Tai House & Mei Tai House, Fu Tai Estate,
Tuen Mun, N.T.
Tel: 3157 1515 Fax: 3157 1514
Email: endeavor@emv.org.hk



The CLEAN Laundry (Social Enterprise)

The company is one of our social enterprises funded by the "Enhancing Employment of PWD through Small Enterprise" Project. It primarily provides quality laundry services to commercial and private estate clients. The company employs individuals with disabilities, providing them with employment and training opportunities.

Address: Room 11, 10/F, Block 4, Nam Fung Industrial City,
18 Tin Hau Road, Tuen Mun, N.T.
Tel: 3523 1072 Fax: 3157 1514
Email: laundry@emv.org.hk



Eco Farm

The services aim to promote integration and inclusivity between individuals with and without disabilities. The operational model includes rental farming services, horticultural planting, and farmers' markets. The promotion of integration, green living, and environmental education are also key aspects.

Address: CS234, Leung Hong Lane, Tuen Mun, N.T.
Tel: 9667 8816 Fax: 3157 1514
Email: ecofarm@emv.org.hk

Elderly Services



Care for the Elderly Living Alone

Through regular volunteer visits, attention is given to the psychological and physical well-being of elderly individuals living alone. Social and emotional support is provided to slow down degeneration and enhance independent living abilities.

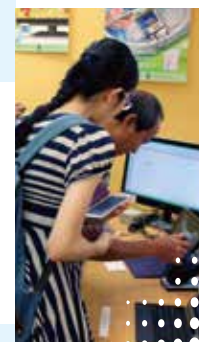
Address: 225-227, Podium Floor, Block 19,
Shek Kip Mei Estate, Kowloon
Tel: 2779 8333 Fax: 3797 3342
Email: care@emv.org.hk



Integrated Home Care Service

Provide home-based community care services for elderly individuals, people with disabilities, and families in need. This includes services for individuals with general needs, mild impairment, physical weakness, as well as caregiver support services, allowing them to continue living in the community.

Address: 225-227, Podium Floor, Block 19,
Shek Kip Mei Estate, Kowloon
Tel: 2360 0803 Fax: 3797 3342
Email: ihcs@emv.org.hk



Jockey Club Digital Inclusion Centre

The centre offers various types of services for the elderly and individuals with disabilities, such as rehabilitative exercises, information technology application groups, and interest classes. These aim to help individuals utilize their leisure time effectively, improve physical abilities, develop skills and interests, and enhance their quality of life.

Address: 225-227, Podium Floor, Block 19,
Shek Kip Mei Estate, Kowloon
Tel: 2776 8569 Fax: 2788 1194
Email: jcdic@emv.org.hk



Community Care Service Voucher Scheme for the Elderly

Our Association is a recognised service provider for the Social Welfare Department's Elderly Community Care Services Voucher Scheme, serving the areas of Wong Tai Sin, Kowloon City, and Sham Shui Po. We primarily provide nursing services, rehabilitation therapy, counseling and referrals, home risk assessment, and home support services.

Address: 225-227, Podium Floor, Block 19,
Shek Kip Mei Estate, Kowloon
Tel: 2360 0803 Fax: 3797 3342
Email: ihcs@emv.org.hk

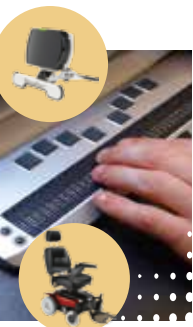
Community Rehabilitation Services



Technical/Computer Aids Services for the Disabled

Design, manufacture, install, and maintain various types of assistive devices and computer-assisted devices for individuals with disabilities and elderly individuals, enhancing their independent living abilities.

Address: 207-212, Podium Floor, Block 44,
Shek Kip Mei Estate, Kowloon
Tel: 2776 8569 Fax: 2788 1194
Email: tcasd@emv.org.hk



Independent Living Fund

Provide interest-free loans to individuals with disabilities for the purchase of assistive devices, assisting them in living independently and improving their quality of life.

Address: 207-212, Podium Floor, Block 44,
Shek Kip Mei Estate, Kowloon
Tel: 2776 8569 Fax: 2788 1194
Email: ilf@emv.org.hk



Jockey Club Desktop Publishing Centre

In a simulated work environment, provide trainings and job opportunities in data entry, desktop publishing, design, website updating, mailing, and printing for individuals with disabilities, with the goal of assisting them in open employment and social integration.

Address: 12-14, G/F., Ying Tung House, Tung Tau Estate,
Wong Tai Sin, Kowloon
Tel: 2776 8569 Fax: 2788 1194
Email: info@emv.org.hk



Electric Wheelchair Repair Clinic and Resource Centre (Social Enterprise)

Provide comprehensive electric wheelchair related services for users in need, including assessment, driver training, onsite repairs, and leasing services.

Address: Unit B, 8/F., Che Wah Industrial Building,
1-7 Kin Hong Street, Kwai Chung, N.T.
Tel: 2772 3080 Fax: 2772 3280
Email: ewc@emv.org.hk



Community Occupational Therapy

Provide assessment and counseling services for individuals with disabilities and elderly individuals facing adaptation challenges in their daily lives. Suitable assistive devices and recommendations for improving home environments are provided.

Address: 207-212, Podium Floor, Block 44,
Shek Kip Mei Estate, Kowloon
Tel: 2776 8569 Fax: 2788 1194
Email: cot@emv.org.hk



Occupational Therapy/Physiotherapy Services

Through lectures, workshops, and trainings, assist the elderly, caregivers, and volunteers in gaining relevant knowledge and skills to enhance the physical functioning of the elderly and caregiving techniques of caregivers and volunteers.

Address: 207-212, Podium Floor, Block 44,
Shek Kip Mei Estate, Kowloon
Tel: 2776 8569 Fax: 2788 1194
Email: otpt@emv.org.hk



The Hong Kong Jockey Club Charities Trust Project IT Solution for Rehabilitation

By integrating the services of the "Computer Rehabilitation Training Resource Station" and the "E-Workshop", design and produce various hardware and software to cater to the training, education, rehabilitation, leisure, and daily living needs of individuals with disabilities, the elderly, and students with learning disabilities, thus enhancing their independence and improving their quality of life.

<https://crehab.hk>

Address: 207-212, Podium Floor, Block 44,
Shek Kip Mei Estate, Kowloon
Tel: 2788 3211 Fax: 2788 1194
Email: itsr@emv.org.hk



Resopedia

The website provides shared and public software information related to rehabilitation and education for individuals with disabilities. Practical resources are provided for professionals engaged in rehabilitation, assisting them in developing training and education plans for service users.

Email: resopedia@emv.org.hk

<https://resopedia.crehab.hk>



Community Rehabilitation Project

Provide community support services for individuals with disabilities and the elderly, aiming to enhance their functioning and activity abilities, enabling independent living and social integration. The program includes assessment, rehabilitative exercises, and caregiver training.

Address: 225-227, Podium Floor, Block 19,
Shek Kip Mei Estate, Kowloon
Tel: 2776 8569 Fax: 2788 1194
Email: info@emv.org.hk



Occupational Deafness Compensation Board - Occupational Deafness Rehabilitation Act

Through diverse cultural and recreational activities, as well as group and volunteer activities, assist members of the Occupational Deafness Rehabilitation Network under ODCB in overcoming difficulties caused by hearing impairment, enriching themselves, enhancing physical and mental vitality, regaining confidence and motivation, reintegrating into the community, and improving their quality of life.

Address: 12-14, G/F., Ying Tung House, Tung Tau Estate,
Wong Tai Sin, Kowloon
Tel: 3618 9009 Fax: 3797 8239
Email: odrs@emv.org.hk



Volunteers Services

The implementation of all our services relies on the active involvement of volunteers. To fulfill the organization's mission, we actively recruit and engage individuals who are willing to serve and connect with service users. Volunteer training is provided, encouraging the utilization of personal professional skills or expertise in volunteer services.

Address: 207-212, Podium Floor, Block 44,
Shek Kip Mei Estate, Kowloon
Tel: 2776 8569 Fax: 2788 1194
Email: volunteer@emv.org.hk

Contact Us

Address: 207-212, Podium Floor, Block 44,
Shek Kip Mei Estate, Kowloon
Tel: 2776 8569
Fax: 2788 1194
Email: info@emv.org.hk
Website: <https://emv.org.hk>

